

# ***A*nslow *R*olleston *T*utbury**

## ***Churches Magazine***

**December 2022**

**&**

**January 2023**



  
**Follow The Star**  
**THE GREAT**  
**INVITATION**



***Contributions for February 2023 edition by 14th January 2023 please***

***30p per Copy £3 per Year***

# A.R.T. PARISHES MAGAZINE

Welcome to the combined December 2022 and January 2023 edition of the magazine for the Churches of Anslow, Rolleston-on-Dove and Tutbury.

Dear Friends

## Endings and Beginnings

I am writing this in the “quiet” 2 weeks between Remembrance and Advent. Yesterday was Remembrance Sunday, when we stood together outside, (thankfully in dry weather), people of all faiths and none, in a national Act of Remembrance, honouring the sacrifices of Armed Forces personnel from the past, in the two Worlds Wars to the present.



My sermon for Remembrance was based on John 15. Jesus said, *“This is my commandment, that you love one another as I have loved you. No one has greater love than this than to lay down their life for their friends”*. We remember to be thankful and secondly, so that we can change. We cannot effect permanent life change ourselves. Only one person can rid us of sin and selfishness – Jesus Christ - who laid down his life so we can be forgiven and have a renewed relationship with God again.

Next Sunday, 20 November, we celebrate “Christ the King”. We end the Church year reading Luke 23, the Easter story. Advent Sunday (27 Nov) begins the new Church year, (a year A), when we focus on the gospel story as told by Matthew. In *Matthew 2*, we read the Epiphany account of the Magi, who noticing a star, followed it to the Christ Child. When they found him, they gave their gifts, they bowed down and worshipped.

The Church of England’s theme for Advent and Christmas 2022 echoes this story of the Magi. **Follow the star: The great invitation.** The Magi followed the star out of curiosity and a sense of something special taking place. We might not be curious anymore as we may know the Christmas story so well. We gather annually to sing carols and hear the nativity readings in our churches. God’s invitation is given to each of us every day, not just at Christmas. *“To all who receive him, to those who believed in his name, he gave the right to become children of God”*. *John 1:12*. We receive God’s gift in faith and trust. It is our choice whether we accept or not. This Advent and Christmas and into 2023, will we search for the Christ child? Will we bow down and worship?

I wish you a Merry Christmas and a happy New Year

*Phyllis*

Phyllis Bainbridge (Revd). *Rector of the ART Benefice: Anslow, Rolleston and Tutbury.*



**A.R.T. CHURCH SERVICES****December 2022 & January 2023**

Please check Facebook and emails, and/or contact Revd Phyllis or the churchwardens for latest information and news

<b>DATE</b>	<b>ROLLESTON</b>	<b>TUTBURY</b>	<b>ANSLOW</b>
<b>Sunday 4 December</b>	9:15am Communion 6.30pm BCP Communion	10am W4A* Communion	11:15am Communion
<b>Sunday 11 December</b>	9:15am Christingle Service	10am Communion 4pm Christingle	11:15am BCP Communion
<b>Sunday 18 December</b>	9:15am Morning prayer 6.30pm BCP Communion	10am Communion 4pm Lessons and Carols	11:15am Crib Service
<b>Tuesday 20 December</b>	7pm <b>Blue Christmas</b>		
<b>Saturday 24 December Christmas Eve</b>	3pm Crib Service 11pm Communion	11pm Midnight Communion	8pm Bethlehem Communion
<b>Sunday 25 December CHRISTMAS DAY</b>	10am Communion	10am Communion	
<b>Sunday 1 January 2023 NEW YEAR'S DAY</b>		10am Communion	
<b>Sunday 8 January</b>	9:15am Communion 6.30pm Evensong	10am Communion	11:15am BCP Communion
<b>Sunday 15 January</b>	9:15am Morning prayer 6.30pm BCP Communion	10am Communion	11:15am Morning Prayer
<b>Sunday 22 January</b>	9:15am W4A* Morning prayer 6.30pm Evensong	10am Communion	11:15am W4A* Morning Prayer
<b>Sunday 22 January</b>	<b>10am Benefice Communion at Tutbury</b> **Celebrant Rev'd Steve Hollinghurst		

**NOTES:**

**Please Note, there is no 8am BCP Communion in Rolleston until 2 April 2023 (Palm Sunday)**

**W4A** = Worship for All. A service particularly suitable for children to attend. It is in the context of Communion in Tutbury, and Morning Prayer in Rolleston and Anslow.

**5th Sundays** - On 5th Sunday mornings, for the moment, we will continue to have a Benefice Communion service at 10am. The venue will alternate between Rolleston and Tutbury Churches.

**\*\* Our next Benefice Sunday** is Sunday 29 January in Tutbury when Revd Steve Hollinghurst, Evangelism Enabler - Environmental Focus, based in Lichfield Church House will be with us.

**Midweek Communion** - Rolleston Thursdays at 9.30am Common Worship Holy Communion. This is followed by coffee club in the OGSR

# Parish Records

## Anslow, Rolleston & Tutbury Benefice

### BAPTISM AND THANKSGIVING SERVICES for October to January 2023

Sunday 9 Oct Baptism of Edith Rose Ward in Tutbury  
 Sunday 6 Nov Thanksgiving for Evelyn Smith in Rolleston  
 Sunday 4 Dec Baptism of Darcie Fletcher in Rolleston  
 Sunday 8 Jan Baptism of Finlay Machin in Tutbury  
 Sunday 15 Jan Baptism of Isaac Smith in Tutbury

If you do not live in an ART Benefice parish, you need to contact your local vicar and ask for their goodwill for this pastoral service to take place in a different parish. If you are interested in arranging a baptism, please contact Revd Phyllis

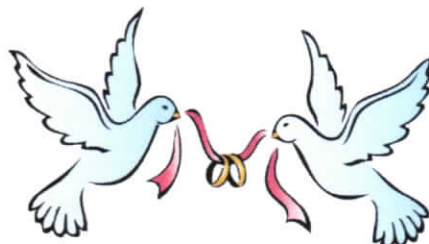
**Please note:** You do NOT have to attend church for 3 months before you can have a baptism. Our practice is to invite parents and godparents to attend a baptism information evening before a date of service is agreed. This is the chance for the family to meet the church team and to hear the serious vows of commitment that will be said in the service. It also gives space to ask questions about faith

### Weddings in our Benefice Those held in October and November

Day	Date	Service	Bride	Groom
Sat	1 Oct	Tutbury	Amy Fenn	Darragh O'Neill
Sat	1 Oct	Anslow	Lydia Ainger	George Thompson
Sat	8 Oct	Tutbury	Rebecca Orton	Charlie Bradley
Fri	4 Nov	Rolleston	Olivia Hartshorn	Philip Stewart

### Recent Deaths and funeral services: 2022

Deceased's name	Died on	Service	Details
Kathleen Cowie	04.09.22	05.10.22	Tutbury church then Churchyard
Janice Sherratt	13.09.22	06.10.22	Tutbury church then Churchyard
Ros Stretton	22.09.22	24.10.22	Bretby Crem
Margaret Jones	30.09.22	01.11.22	Rolleston Church the Roll Cemetery
Ena Powlson	03.10.22	20.10.22	Rolleston Church then Bretby Crem
Nancy Mason	13.11.22	tbc	



## Thinking Aloud & Allowed

### Home Alone for Christmas?

Might you be alone for Christmas Day this year?

Chris and Phyllis's family are either overseas (their younger son lives in Sao Paulo, Brazil and Phyllis's father is in El Medano, Tenerife) and older son and his family are with the "other side" this Christmas.



Rev'd Phyllis and husband Chris are inviting other "alone people or alone couples" to share Christmas dinner with them in the Old Grammar School Room (OGSR), Rolleston (next to the Church), 12.30pm for drinks with a sit-down meal at 1pm.

Offers to help set up on Christmas Eve, contribute food, and washing up will be much appreciated.

*RSVP to Phyllis by Monday, 12th December. Thank you.*

### Friday Fish and Chips, and Film Nights

Are you lonely or bored?

Do you miss doing out and meeting people?

An event that works in some parishes, and one of my previous churches is a Friday night film club. It started during Lent with 10 of us watching "the Miracle Maker". We had a fish-and-chips tea together beforehand. (We each paid our own). We enjoyed the evening so much that we decided to continue to meet monthly and watch other films with a Christian theme e.g. "Bruce Almighty", "Prince of Egypt", "UP", "The Hiding place", "The Lion, the Witch and the Wardrobe", "Amazing Grace". Over that year, the group grew from 10 to 32 regular attenders, and most were not church members.

We have introduced this here in Rolleston in the Old Grammar School Building next to the Church and we have just had our 1st year anniversary. The evenings start with fish and chips, (or the like) at 6pm. We order our supper in advance, through Phyllis. (Someone else might offer to be co-ordinator later). The film starts at about **6.40pm**. The issue with copyright is that we cannot announce, in writing, which film will be shown, but we can give hints.

*The next Film nights are **Fridays 27 January and 24 February 2023.***

### Churchyard Reminder

With respect to grieving families, the three Parochial Church Councils (PCCs) in the ART Benefice wish to remind everyone of the Lichfield Diocesan Churchyard regulations.

Our churchyards are places in which to reflect and remember for our whole community. They are also subject to restrictions for the benefit, safety, and fairness of all who visit.

*...Continued on Page 8/*

## Thinking Aloud & Allowed

*/Continued from Page 7...*

Please note - Before a headstone is in place, only one free-standing floral arrangement or container is permitted, and it is to be placed where the headstone will be.

Once an upright or flat headstone is placed, only one floral tribute is only permitted ON the headstone. When it is an anniversary of the loved one's birth, death, or Christmas, more arrangements are permitted but not to encroach on neighbouring grave spaces. These additional tributes are to be removed three weeks after the said anniversary.

We respectfully remind families that "gardens", edgings, curbs, pebbles stone chippings, ceramic, glass, or plastic ornaments are not permitted in Anglican Churchyards.

Over winter, work will be done in the three churchyards to return them to the Diocesan guidelines. We request families to work on their own loved ones' graves please. The PCC can give particular and personalised advice on what is acceptable or not.

If a family wishes to be exempt from the diocesan guidelines, then a faculty (a legal permission) can be applied for from the Diocesan lawyer. There is a cost to the family for this.

Please contact Revd Phyllis or the Churchwardens if you wish clarification or further details on this. Thank you

### **Opportunities for Ministry and Serving in our Benefice**

For very good and understandable reasons, many people in our benefice have stood down or retired from jobs and roles they did in our 3 churches. The following are some of the areas of Church Life where we need volunteers, please.

**Team for Priory Pantry in Tutbury: Saturday mornings** - As above to be on the rota as a team member not as team leader. You would always be on rota with a more experienced team member. The job involves setting up, making and serving refreshments, clearing the kitchen and setting down ready for church on Sunday. For more information, please see Margaret Pyle, Warden.

**A minutes Secretary for Tutbury PCC.** - Following the retirement of Cath Harrison at the 2022 APCM, we thank her for the great job she did in this role. We are now looking for a new Minutes Secretary. The job involves 6 PCC meetings a year and 1 APCM, recording the minutes in person. The minutes then need to be written up and sent to Phyllis and the lay chair for proof reading. The Minutes are then sent to the PCC Members by email. The Standing Committee works with the Phyllis and the PCC minutes secretary to set the agenda for the next PCC meeting.

*...Continued on Page 15/*

# Tutbury News 1

## Regular Church Opening Times

Thursdays - 10am—12pm, Priory Crafters

Saturdays - 10am - 12pm, Priory Pantry

Sundays - 9.30am—12.30pm, Service at 10am

## Diary for St Mary's Tutbury

### December 2022

#### Forthcoming Events

Saturday 10 December—Uttoxeter Band and Health Chorus Concert - 7pm

Tickets at the door are **£10** which includes a glass of mulled wine and mince pies.

Sunday 11 December - Christingle Service - 4pm

Friday 16 December - Friday Voices in Concert 7.45pm

Sunday 18 December - Parish Carol Service - 4pm

## Remembrance Sunday - 13 November

The day dawned bright, clear with little wind and was warm for the time of year. The village's organisations both uniformed and ununiformed assembled outside the village hall. At 10.30am, we set off behind a piper and a base drummer marching the traditional route



round the village to the war memorial .../

/... outside the church. It seemed that half the village was out to join in.

At 11am exactly, the Act of Remembrance at the memorial, the prayers, the naming of the fallen, the minute's silence and reveille was enacted just as it was all over the UK and much of the Commonwealth, and just as it has been enacted for over 100 years. All the organisations of the village then laid their wreaths around the foot of the memorial under the direction of Mr Pete Steadman.

At 11.15am, the uniformed services marched into the Church followed by the general public for an Anglican Service of Remembrance. Again, this service would be well recognised by people from over all the UK.

Rev'd Phyllis Bainbridge, Rector of the Benefice, gave a thoughtful sermon on loving and sharing. One of her props was a very large bar of Chocolate.

There were some 300 men, women and children in the Church for the Service.

Special thanks must be given to Pete Steadman, Scout leader and chairman of the Tutbury Parish Council for organising the Act of Remembrance We must also thank the many people who assisted in its organisation. The Act and the Service went flawlessly.

## Update—Harvest Festival

Following the Harvest Festival and lunch, the YMCA have now written to acknowledge receipt and thank us for the Church congregation's considerable donation of tinned and dried food for use in their food bank for the local needy.

## Tutbury News 2

### Priory Pantry

The bacon cobs are a great success!

The Church is open every Saturday morning from 10am to 12noon for coffee and cake. It is a popular venue for informal sustenance and chat.

### Priory Crafters

The Crafters meet on Thursday mornings from 10am to 12 noon in the priory Suite of the Church. You don't need to knit, crochet or sew; anyone is welcome for a chat and a cuppa. There are ladies in the group who are excellent crafters and they are very happy to help people who wish to learn.

the Crafters did have a project to knit small angels to a fixed pattern to give out to children from the Church's stall at Tutbury's "Christmas lights Switch-on" event. Literally hundreds were available to give out..



### Church Heating - Update

We continue to investigate the most efficient ways to repair and update our rather ancient and inefficient heating system in the face of some very large bills. For example, over the last 12 months, the Church has spent an eye-watering £8,300 on gas alone. This will possibly double for the next 12 months, given the more recent large increases in energy prices.

We are currently obtaining prices and estimates from specialist contractors and ways to obtain grant funding.

### TUTBURY MOTHERS' UNION

Dear Friends

By the time that you are reading this, the season of Advent will have begun. So, on behalf of all our members, may I take this opportunity of wishing you all, a very happy Christmas and a peaceful 2023.

At our last meeting, it was agreed that our 2023 meetings would be held on the first Wednesday of every month at 2pm. Therefore, our first meeting of 2023 will be **2pm on Wednesday, 4th January in Willows Tea-room, Tutbury.**

Finally, we were actually able to meet up with John Anderson of Burton Hope Project during the Priory Pantry morning



on 19th November. We handed over 40 plus pairs of men's and women's socks that were given to us by Lichfield Diocese Mothers Union. In addition, our members also donated tinned fruit, pasta sauces, rice puddings and UHT milk.

You can see Burton Hope Project's details on [Page15](#)

Don't forget, if you require further info, please contact Sue Norris on **07817 281695** or [teddy1915@sky.com](mailto:teddy1915@sky.com).

### Burton HOPE

Award Winning Community Team

Charity reg. no. 1187330

Thank you for your support, all of you wonderful folk in Tutbury.

*See Page 15 to see how you can support our essential work in the Community*





## Thinking Aloud and Allowed (Continued)

*/Continued from Page 8*

If you are interested in this post, please contact either Cath Harrison, who has done the job, and Phyllis, or the Tutbury Church Wardens. The person does not need to be a regular attender in Tutbury Church.

**A paid post of Benefice Administrator.** - This will be a part time, paid post, (probably 9 hours a week) primarily to work with Phyllis on the occasionals (admin) ministry and planning, although the job will be more than this.

The three PCCs are discussing the details of the post, the job description, and the funding  
If you are interested, please contact Phyllis.

# Burton HOPE

**(Award Winning Community Team)**

Charity reg. no. 1187330

**Thank you for your support, all of you wonderful folk in Tutbury.**

**HOPE2STREET.** Outreach with our homeless people.

We have a huge team of unpaid volunteers. We set up in Burton Market Place each weekend to feed and clothe people in need.

**HOPE2HOME.** Midweek food parcel delivery service. Orders are taken from other agencies and self-referrals direct from service users and delivered to the door.

**HOPE4SUPPORT.** We refer/advocate for medical, mental health, housing, employment, benefits, addiction and many other issues.

**HOPE4ID.** Identification documents are obtained for individuals in crisis. Without ID a person cannot be housed or work. We obtain UK birth certificates and EU passports.

Website: <https://www.BurtonHOPE.co.uk>

Facebook: <https://www.facebook.com/BurtonHOPE.co.uk>

**To keep our food bank running we always need the following:**

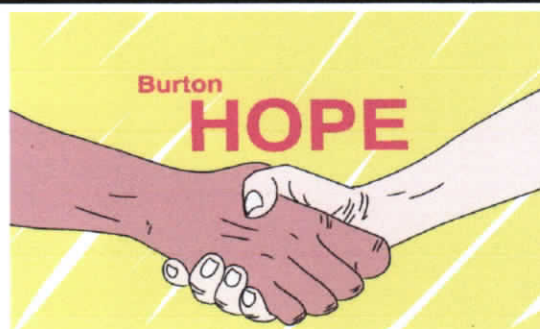
Tinned food of all types. Pasta sauce (not pasta as we have a supply). Energy bars, chocolate, snack bars, biscuits. Pot noodles. UHT milk, instant hot chocolate, crisps, coffee. Rice. Cereals. Just about any food that can be stored easily and safely at room temperature.

All toiletries, including the mini hotel toiletries. We can only take unopened items.

Rucksacks, one or two person tents and roll mats.

Utility adult clothing. Tee shirts, hoodies, sweatshirts, jeans, jogging bottoms, socks, trainers, boots, coats.

**Cash donations. Sort Code: 30-98-97 Account no: 52256860**



## AND NOW...



**Christmas Carol Service**  
**Saturday 3rd December**  
**Tutbury Village Hall**

Local Vocals and Harmonics are both Community Choirs based in Tutbury and will be joining forces for a Special Joint Carol Service.

So why not come along to a Carol Service with a difference. It will be a Festive Evening of Carols old and new, with both choirs singing together and separately, with audience participation as part of the evening and of course a raffle.

This Special Carol Service will be held on Saturday **3rd December 2022** starting at **7.30pm** at Tutbury Village Hall.

**Tickets to this event will cost £5.00 available at the door**, and the price will include a mince pie and a glass of wine. Further glasses of wine will be available to purchase.

The choirs will be led by Steve Mitchell for Harmonics and Willow and Rowan for Local Vocals.

For more information please contact Margaret Topley **07984 371490** or Steve Mitchell **07746 193644**

## Sudoku

1	5		3				9
2		4			8		5
6							
	1				6		2
	9		5				4
							8
8			7			6	4
4					2		1 7

© 2008 KrazyDad.com

		9	6			2	
8				1	2	7	5
	2	5	7	9		4	3
			4		9	8	5
		2				9	
	5	3	1		7		
	1	4		7	6	3	8
2		7	8	4			9
		8			1	5	

© 2008 KrazyDad.com

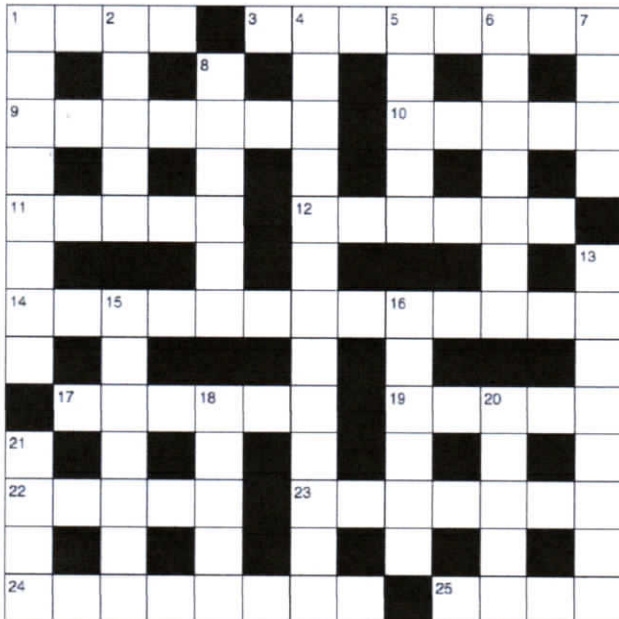
### Solution to Crossword on Page 17

**ACROSS:** 1, Hide. 3, Disgrace. 9, Sonship. 10, Oaths. 11, Tutti. 12, Ignore. 14, Foreknowledge. 17, Ashram. 19, Men or. 22, Aroma. 23, Nineveh. 24, Amethyst. 25, Trod.

**DOWN:** 1, His staff. 2, Do not. 4, Imprisonments. 5, Groan. 6, Altered. 7, Easy. 8, Shrink. 13, Searched. 15, Restore. 16, Lament. 18, Reach. 20, Never. 21, Jada

# FUN PAGE

## CROSSWORD



### Across

- 1 'How long will you — your face from me?' (Psalm 13:1) (4)  
 3 'Let us, then, go to him outside the camp, bearing the — he bore'(Hebrews 13:13) (8)  
 9 Posh sin (anag.) (Romans 8:15) (7)  
 10 Solemn pledges (Matthew 5:33) (5)  
 11 Italian term for full orchestra (5)  
 12 'For he who avenges blood remembers; he does not — the cry of the afflicted' (Psalm 9:12) (6)  
 14 Prescience (1 Peter 1:2) (13)  
 17 Where a Hindu holy man lives (6)  
 19 'If he found any... who belonged to the Way, whether — — women, he might take them as prisoners' (Acts 9:3) (3,2)  
 22 Fragrance (2 Corinthians 2:15) (5)  
 23 Vine hen (anag.) (Jonah 1:2) (7)  
 24 Precious stone decorating the twelfth foundation of the New Jerusalem (Revelation 21:20) (8)  
 25 'Will you keep to the old path that evil men have — ?' (Job 22:15)

### Down

- 1 'Then Moses raised his arm and struck the rock twice with — — ' (Numbers 20:11) (3,5)  
 2 'You have heard that it was said to the people long ago, " — — murder"' (Matthew 5:21) (2,3)  
 4 One of Paul's many hardships endured as a servant of God (2 Corinthians 6:5) (13)  
 5 'We ourselves, who have the firstfruits of the Spirit, — inwardly' (Romans 8:23) (5)  
 6 Changed (Daniel 6:8) (7)  
 7 'My yoke is — and my burden is light' (Matthew 11:30) (4)  
 8 Recoil (Revelation 12:11) (6)  
 13 'O Lord, you have — me and you know me' (Psalm 139:1) (8)  
 15 ' — to me the joy of your salvation' (Psalm 51:12) (7)  
 16 Express sorrow (Isaiah 16:7) (6)  
 18 'Then he said to Thomas, " — out your hand and put it into my side"(John 20:27) (5)  
 20 'God has said, " — will I leave you; — will I forsake you"' (Hebrews 13:5) (5)  
 21 Son of Onam and brother of Shammai (1 Chronicles 2:28) (4)

**Check your answers on Page 16**





**Local Vocals** is a Community Choir based in Tutbury. We are always on the lookout for new choir mem-

bers. Did you see our last article and think, I would like to try that but never got round to contacting us, well this is another chance to find out more. So, don't be the secret singer in the shower! Come and join Local Vocals, and sing with us!

We do not hold auditions, you do not have to be able to read music, but if you love to sing and want to join like-minded people, then come and join us.

Unsure if you are a soprano, alto, tenor or bass? Not even sure what that means. No problem; just come and see which part suits you best.

We meet weekly at the Congregational Church, Monk Street, Tutbury, from 7.30 to 9pm on a Wednesday. Your first week is free. So, if you want to try us out, do come along. We will be starting back in 2023 on 4th January.

We have a wonderful Musical Director Willow who leads us, and we sing all types of music from Doo-Wap (think Blue Moon) to Folk, Beach Boys to The Beatles and most things in between.

So please feel free to come and meet us; we are a friendly group.

For more information please contact **Margaret Topley 07984 371490** or email: [info@localvocals.co.uk](mailto:info@localvocals.co.uk)

## **Anslow Village Hall**

*Charity No 522599*

The Hall was officially opened on 23rd August 1952 and we celebrated the 70th Anniversary event, on 11th September.

However if the hall is to remain open and in good order for another 70 years then we need more volunteers to come forward and become trustees, in particular a secretary.

Without sufficient trustees to help run the hall, there is a danger it will have to close.

This would be a great pity as it is a huge asset to the village and very well used. So if this is something you might like to get involved with, please contact me on [anslowvh@gmail.com](mailto:anslowvh@gmail.com) or **07943 274020**.

Liz Staples (Treasurer)

## **Uttoxeter Band**



and



## **Health Chorus Concert**

**Saturday 10 December**

**St Mary's Priory Church,  
Tutbury**

**Starting at 7pm**

**Tickets at the door are £10 which includes a glass of mulled wine and mince pies.**



## A.R.T. Churches Contact Details

**Rector:** Rev. Phyllis Bainbridge 01283 814802 [revdphyllisbainbridge@gmail.com](mailto:revdphyllisbainbridge@gmail.com)  
**Associate Minister:** Rev. Dave Robbins 01283 814051, [dave@robbinsdrw.plus.com](mailto:dave@robbinsdrw.plus.com)  
**Lay Readers:** Carol Webster 01283 520868/07715 521935 [rolleston1438@yahoo.co.uk](mailto:rolleston1438@yahoo.co.uk)  
 David Bousie 01283 546457 [d.bousie@btinternet.com](mailto:d.bousie@btinternet.com)

### ANSLOW

**Churchwardens** Pat Lawley [japlawley@gmail.com](mailto:japlawley@gmail.com)  
 Barry Snaith 07497 109082 [b.snaith136@outlook.com](mailto:b.snaith136@outlook.com)  
**PCC Secretary** Ann Lowe 01283 812428  
**Websites:** [achurchnearyou.com/anslow](http://achurchnearyou.com/anslow) [anslowvillage.co.uk](http://anslowvillage.co.uk)

### ROLLESTON

**Churchwardens** Bryan Pickering 01283 815378 [secsltd@yahoo.com](mailto:secsltd@yahoo.com)  
 Lee Cooke 07973 411431  
**Deputy Warden** David Bousie 01283 546457 [d.bousie@btinternet.com](mailto:d.bousie@btinternet.com)  
**PCC Secretary** Kath Pickering 01283 815378  
**Floodlighting** Tom Martin 01283 813320 [martin.43@btinternet.com](mailto:martin.43@btinternet.com)  
**Gift Aid Officer** Robin Skinner 01283 812998  
**OSGR Contacts** Bryan Pickering & Lee Cooke *(See above for details)*  
**History & Records** Arnold Burston 01283 813457 [arnburston@yahoo.com](mailto:arnburston@yahoo.com)  
**Weddings & Christenings** Rev'd Phyllis Bainbridge [revdphyllisbainbridge@gmail.com](mailto:revdphyllisbainbridge@gmail.com)  
**Rolleston Bellringers** Lee Cooke 07973 411431  
**Websites:** [Rolleston.org.uk/stmarys](http://Rolleston.org.uk/stmarys) [yourchurchwedding.org](http://yourchurchwedding.org)

### TUTBURY

**Churchwardens** Jackie Benstead 01283 814014 [info@jackiebenstead.co.uk](mailto:info@jackiebenstead.co.uk)  
 Margaret Pyle 01283 813366 [ma.pyle@hotmail.co.uk](mailto:ma.pyle@hotmail.co.uk)  
**Weddings & Christenings** Rosemary Tunstall 01283 509774 [rosetunstall25@gmail.com](mailto:rosetunstall25@gmail.com)  
**Websites:** Glen Evans [stmarystutbury.org](http://stmarystutbury.org) [stmarystutburychurch@gmail.com](mailto:stmarystutburychurch@gmail.com)

**Tutbury Bellringers** Lee Cooke 07973 411431

**ART Magazine Editor:** Philip Norris 07931 841085 [philgnorris@gmail.com](mailto:philgnorris@gmail.com) \*

*\* Contributions are always welcome as space allows. The Magazine costs £3.00 per year and it is normally published 10 times a year. Additional material is supplied from the Parish Pump \* Contributions deadline 14th of the Month for the following month's edition*